

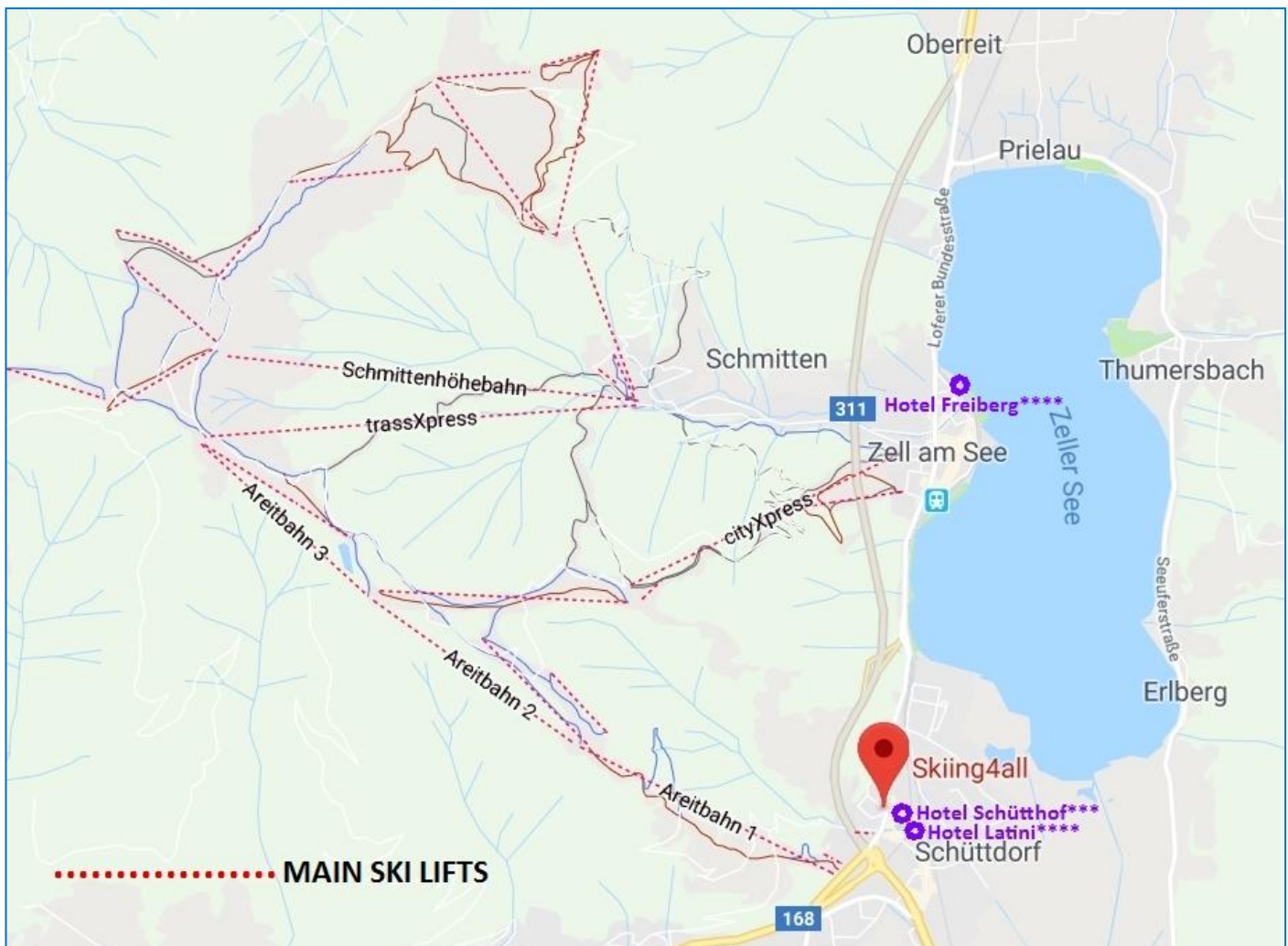
# Partner Hotels

We put a lot of effort into choosing the right accommodation for our guests. We currently work with three excellent hotels, all offering something truly unique for our guest families in terms of their service, location and value for money. Two hotels: Schütthof\*\*\* and Latini\*\*\*\* are located just across the road from our [Skiing4all Centre](#) and within 4-5 minutes walking distance to the slopes and the brand new 10-seater areitXpress Gondola, which will quickly whisk you up the mountain in great comfort. The third hotel: Freiberg\*\*\*\* is located right at the shore of the beautiful Zeller lake and next to the pedestrian zone of our medieval town.

**Our partner hotels understand the needs of our guests and this includes provision of various special diets, including the popular gluten-free diet.**

In addition, our accommodation providers kindly contribute to our program running costs for each family staying with them, and hence **we are able to offer lower program prices to those guests who stay at one of our partner hotels, and who book their rooms directly by email with the property, as instructed on p. 24.**

If you would rather stay at your own accommodation, it is fine with us too, but unfortunately your program price will not include the discount mentioned above.



This map might not be too scale and is intended for orientation purposes only.

# Hotel Schütthof\*\*\*

At Hotel Schütthof\*\*\*, the traditional Austrian hospitality and a cosy ambience at fantastic rates are awaiting you from the moment you step in. You will find great amenities and services at this 3-star hotel, which we would class as a 4-star! The comfortable and pleasant rooms are oases of well-being and the restaurants and bars invite you to stop for a delicious meal. The hotel also boasts a beautiful new wellness & spa area. Guests can also enjoy an extensive garden and playground for children.

**Location:** The hotel is located in Schüttdorf, a peaceful district of Zell am See, on the south side of the lake. Next door to Hotel Latini\*\*\*\*. Near bus stops, restaurants, cafes, banks and shops.

**How to get to [Skiing4all](#):** Just cross the road!

**How to get to skiing:** Walk 3-4 minutes to Areit ski base, which is perfect for all the family members. It boasts not only the best nursery slope in Zell am See for the little ones but also the easiest access to the high mountain slopes for the more advanced skiers by a brand new areitXpress 10-seater gondola. The Areit cable car valley station contains everything you might need for a hassle-free ski holiday, all in one building: Intersport ski hire shop, ski ticket office, tourist information, ski lockers, toilets, ski shop, restaurant and bars.

**Included in the hotel price** (see p.23 for prices):

- ✓ Half-board
- ✓ Free use of the hotel Vulcano Spa with saunas, steam rooms and a beautiful terrace overlooking the Kitzsteinhorn

**Room types:** Double "Areit", Double "Schmitten" and Junior Suite "Kitzsteinhorn".

## Schütthof Hotel\*\*\* Double Room "Areit":

comfortable twin/double bed with high quality mattresses

bathroom with shower, WC and a towel warmer

cable TV with 19 channels and radio

WLAN internet access

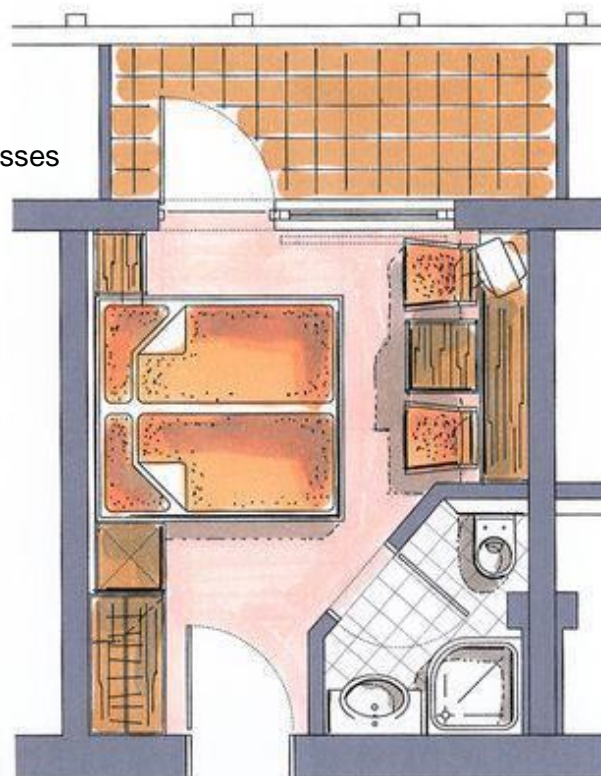
safety box

telephone

some rooms with balcony

**approx.15 m<sup>2</sup>**

**sleeps up to 2**



### Schütthof Hotel\*\*\* Double Room "Schmitten":

comfortable twin/double bed with high quality mattresses

bathroom with bath or shower, WC and towel warmer

sitting area

cable TV with 19 channels and radio

WLAN internet access

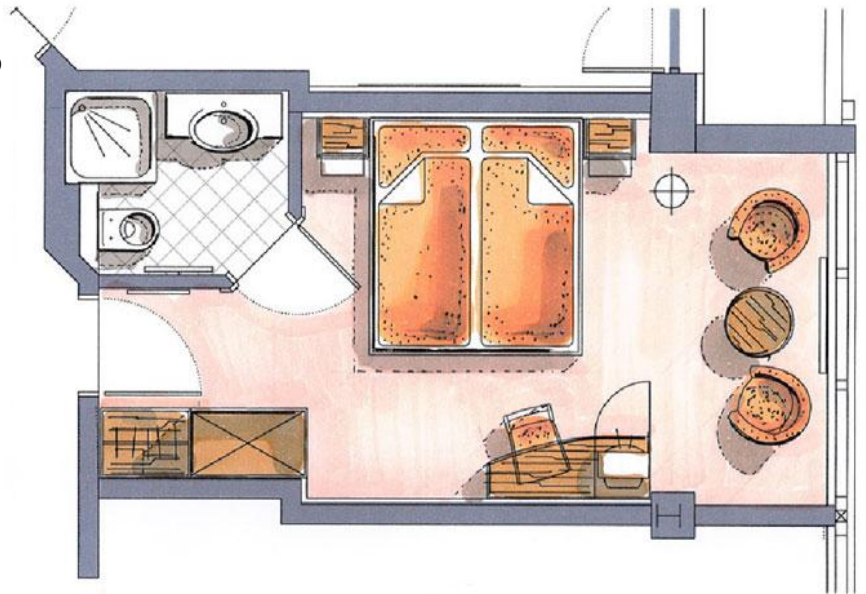
safety box

telephone

some rooms with balconies

**approx. 17 - 21 m<sup>2</sup>**

**sleeps up to 3**



### Schütthof Hotel \*\*\* Junior Suite "Kitzsteinhorn":

comfortable twin/double bed with high quality mattresses

bathroom with shower, WC, bidet and towel warmer

living room with a double sofa bed and a sitting area

2 x cable TV with 19 channels and radio

WLAN internet access

safety box

telephone

some rooms with balconies

**approx. 30 m<sup>2</sup>**

**sleeps up to 5**





## Hotel Latini \*\*\*\*

The charming Hotel Latini\*\*\*\* has much more to offer than just very comfortable hotel rooms, fantastic amenities and excellent value for money. Experience a wonderful holiday with international flair and traditional Austrian hospitality all under one roof! Beautifully decorated rooms with newly fitted bathrooms, hair-drier, balcony, safety box, cable TV, radio, telephone and internet access. The extensive garden with a playground for children is especially popular with families. There are several restaurants and bars, a beautiful indoor swimming pool, sauna, steam bath, vitarium, fitness room and an extensive wellness area.

**Location:** The hotel is located in Schüttdorf, a peaceful district of Zell am See, on the south side of the lake. Next door to Hotel Schütthof\*\*\*. Near bus stops, restaurants, cafes, banks and shops.

**How to get to [Skiing4all](#):** Just walk approx. 100 metres and cross the road!

**How to get to skiing:** Walk 4-5 minutes to Areit ski base, which is perfect for all the family members. It boasts not only the best nursery slope in Zell am See for the little ones but also the easiest access to the high mountain slopes for the more advanced skiers by a brand new areitXpress 10-seater gondola. The Areit cable car valley station contains everything you might need for a hassle-free ski holiday, all in one building: Intersport ski hire shop, ski ticket office, tourist information, ski lockers, toilets, ski shop, restaurant and bars.

**Included in the hotel price** (see p.23 for prices):

- ✓ Half-board
- ✓ Free use of the hotel Gold Spa with a beautiful indoor swimming pool, saunas, steam rooms, beauty treatments and fitness room

**Room types:** Double "Alpenrose", Double "Enzian" and Junior Suite "Edelweiss".

### Latini Hotel\*\*\*\* Double Room "Alpenrose":

comfortable twin/double bed with high quality mattresses

bathroom with shower, WC, hair-drier, make-up mirror and towel warmer

cable TV with 35 channels and radio

WLAN internet access

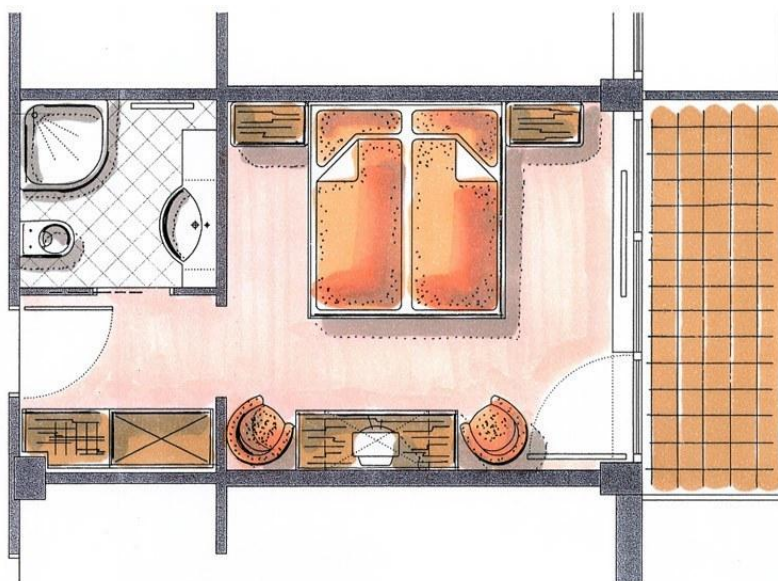
safety box

telephone

balcony

**approx. 20 m<sup>2</sup>**

**sleeps up to 3**



### Latini Hotel\*\*\*\* Double Room "Enzian":

comfortable twin/double bed with high quality mattresses

relaxing lounge area with a double sofa bed

bathroom with shower, WC, hair-drier, make-up mirror and towel warmer

cable TV with 35 channels and radio

internet access

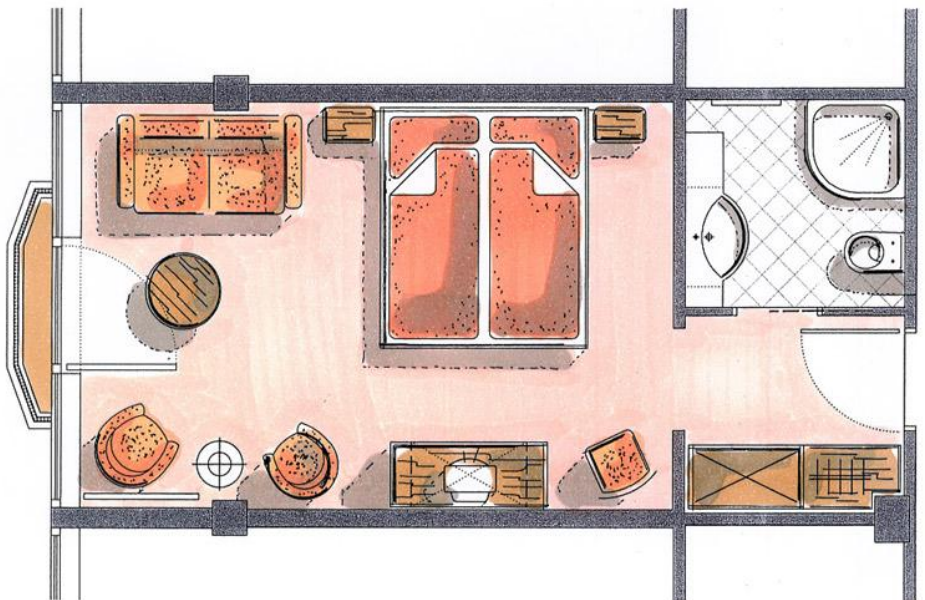
safety box

telephone

French balcony (windows and balustrade down to the floor)

**approx. 25 m<sup>2</sup>**

**sleeps up to 4**



### Latini Hotel\*\*\*\* Junior Suite "Edelweiss":

bedroom with a comfortable double bed with high quality mattresses, TV set and radio

living room with a comfortable sofa bed and TV set

bathroom with shower, WC, hair-drier, make-up mirror and towel warmer

2 x cable TV with 35 channels and radio

internet access

safety box

telephone

balcony

mini-bar

**approx. 33 m<sup>2</sup>**

**sleeps up to 5**



## Hotel Freiberg \*\*\*\*

Hotel Freiberg\*\*\*\* with a long tradition of personal service, combines comfortable living with the elegant ambience of the conservatory and lounge. All the rooms are furnished exclusively with natural materials and all feature balconies with fantastic direct lake views. The lobby offers cosy areas including a comfortable room with a fire place, a traditional farmers' room and a new reception area.

A newly designed bar with a fantastic view over the lake completes the look. Here is the chance to slow down and regain a zest for life. You can enjoy Austrian delicacies in a panoramic restaurant overlooking the frozen lake. The chef uses local products to create regional specialties as well as a selection of light dishes and vegetarian cuisine. The children can enjoy a play area in the lobby and a children's playground at the lake. The hotel luxury spa offers breathtaking views of the lake and mountains.

**Location:** Directly at the shore of the beautiful Zeller lake and just a minute walk to the pedestrian zone of the Old Town.

**How to get to Skiing4all:** Walk or take a free hotel ski shuttle to CityXpress ski lift (approx. 3 minutes' drive, might not operate in the lowest season), followed by a ski bus towards Areit. After approx. 5 minutes' ride, get off at the fourth bus stop located next to our building. The ski bus is free in the main winter season. Alternatively, a taxi fare from your hotel to us will cost approx. 8€ for up to 8 people, and the direct journey should take 5-7 minutes.

**How to get to skiing:** From Freiberg hotel, you have two main options to access the Schmitten mountain slopes. You can either go up by CityXpress cable car located in the centre of Zell am See, to which you can walk or take a free hotel ski shuttle (approx. 3 minutes' drive, might not operate in the lowest season), or go up by Areitbahn cable car located near our Skiing4all base in Zell am See-Schuttdorf (see map on p.16). Please bear in mind that at least one adult will need to drop off and collect our program participant from us each day.

Our nearby Areit ski base is perfect for all the family members. It boasts not only the best nursery slope in Zell am See for the little ones but also the easiest access to the high mountain slopes for the more advanced skiers by a brand new areitXpress 10-seater gondola. The Areit cable car valley station contains everything you might need for a hassle-free ski holiday, all in one building: Intersport ski hire shop, ski ticket office, tourist information, ski lockers, toilets, ski shop, restaurant and bars.

**Included in the hotel price** (see p.23 for prices):

- ✓ Half-board
- ✓ Free use of the hotel Wellness Area & fitness room with lake view
- ✓ Bathrobe and slippers in the room
- ✓ Ski shuttle

**Room types:** Lake Paradise Standard, Lake Paradise Superior and Family Room



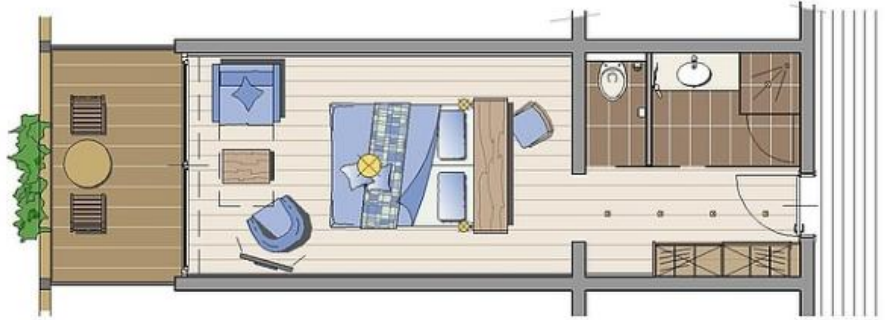
### Freiberg Hotel\*\*\*\* Lake Paradise Standard:

Room in warm colours, flooded with light, and equipped with:

- small sitting area
- bath or shower, hairdryer
- seperate toilet
- safe
- minibar
- telephone, radio & flat screen TV
- balcony with direct LAKE VIEW

**approx. 25 m<sup>2</sup>**

**sleeps up to 3**



### Freiberg Hotel\*\*\*\* Lake Paradise Superior:

Room in a traditional design with lots of space. Bright colours and big panoramic windows with LAKE VIEW provide perfect holiday atmosphere. The room is equipped with:

- cosy sitting area
- bath or shower, hairdryer
- seperate toilet
- safe
- minibar
- telephone, radio & flat screen TV
- balcony with direct LAKE VIEW

**approx. 35 m<sup>2</sup>**

**sleeps up to 3**



### Freiberg Hotel\*\*\*\* Family Room:

Two newly designed bedrooms, guarantee harmonious and fun family holidays.

**Each bedroom is equipped with:**

- small sitting area
- bath or shower, hairdryer
- seperate toilet
- safe
- minibar
- telephone, radio & flat screen TV
- balcony with direct LAKE VIEW

**2 rooms = approx. 50 m<sup>2</sup>**

**2 rooms sleep up to 6 in total**



# 2019/20 Hotel guideline prices in EUR

<b>Schütthof Hotel*** prices in EUR per adult per night with half-board</b>			
Season	Double Room "Areit"	Double Room "Schmitten"	Junior Suite "Kitzsteinhorn"
30.11.19 - 20.12.19	82	92	109
21.12.19 - 05.01.19	110	120	130
06.01.20 - 31.01.20	82	92	109
01.02.20 - 08.02.20	92	102	119
09.02.20 - 29.02.20	110	120	130
01.03.20 - 21.03.20	92	102	119
22.03.20 - 25.04.20	82	92	109
<b>CHILDREN per night in EUR (in a room with two full paying adults):</b>			
Under 3 years: free    3 - 6 years: 20                      7 - 11 years: 37                      Over 12 years: 55			

<b>Latini Hotel**** prices in EUR per adult per night with half-board</b>			
Season	Double Room "Alpenrose"	Double Room "Enzian"	Junior Suite "Edelweiss"
30.11.19 - 20.12.19	99	113	128
21.12.19 - 05.01.19	140	155	168
06.01.20 - 31.01.20	99	113	128
01.02.20 - 08.02.20	118	133	148
09.02.20 - 29.02.20	140	155	168
01.03.20 - 21.03.20	118	133	148
22.03.20 - 25.04.20	99	113	128
<b>CHILDREN per night in EUR (in a room with two full paying adults):</b>			
Under 3 years: free    3 - 6 years: 20                      7 - 11 years: 37                      Over 12 years: 55			

<b>Freiberg Hotel**** prices in EUR with half-board</b>			
Season	PER ADULT per night		PER ROOM Family Room (based on 2 adults + 2 children, extra children at a supplement)
	Lake Paradise Standard	Lake Paradise Superior	
30.11.19 - 20.12.19	115	125	365
20.12.19 - 28.12.19	130	140	399
28.12.19 - 04.01.20	155	165	465
04.01.20 - 15.02.20	115	125	365
15.02.20 - 07.03.20	130	140	399
07.03.20 - 25.04.20	115	125	365
<b>CHILDREN'S discounts (in a room with two full paying adults):</b>			Up to two children included in the room price, each extra person 25€/night. Maximum occupancy 3+3.
Under 2 years FREE 3 - 12 years : 60% OFF                      13 - 16 years: 35% OFF			



# Skiing4all Hotel Booking Instructions

If you would like to stay at one of our partner hotels and qualify for the discount of 300€ off our Skiing4all Program price\*, please make sure that you follow these three simple rules:

1. Contact one of our partner hotels **DIRECTLY BY EMAIL** (see contact details below). Please kindly note that booking through any agents or online booking services, including our partner hotel own websites, will **\*NOT\*** qualify you for a Skiing4all discount!
2. **IN YOUR FIRST EMAIL MENTION A BOOKING CODE "SKIING4ALL".** This is vital so that you get registered as a Skiing4all Guest with the hotel.
3. Please note that you can book your hotel *before* or *after* securing a place on one of our Skiing4all Programs. However, we will need **a copy of your hotel booking confirmation two weeks before your arrival at the latest.** Failing this, we will regretfully need to charge you the full Skiing4all program price.

## Our partner hotel contact details:

HOTEL	Website	Email	Telephone
Schütthof***	<a href="http://en.hotel-schuetthof.at/">http://en.hotel-schuetthof.at/</a>	<a href="mailto:schuetthof@latini.at">schuetthof@latini.at</a>	+43 6542 5425 181
Latini****	<a href="http://en.latini.at/">http://en.latini.at/</a>	<a href="mailto:office@latini.at">office@latini.at</a>	+43 6542 5425 181
Freiberg****	<a href="https://www.seevilla-freiberg.at/en/">https://www.seevilla-freiberg.at/en/</a>	<a href="mailto:info@seevilla-freiberg.at">info@seevilla-freiberg.at</a>	<a href="tel:+43654272643">+43 6542 72643</a>

\* The discounted price for one Skiing4all program participant per family only (applies to the lowest program value).